



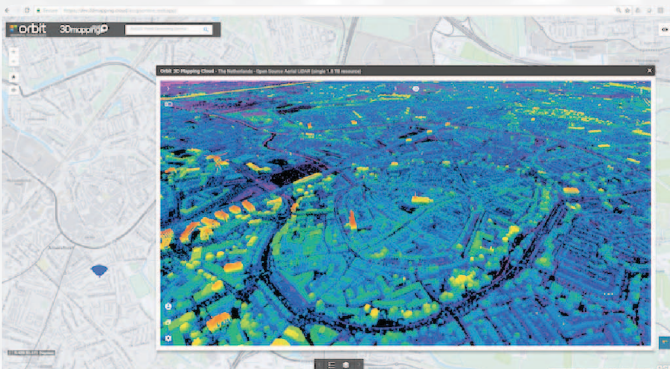
# SMART<sup>TM</sup> 3D MAPPING

Software to Capture, Model and Share

DESKTOP

SERVER - CLOUD

# MASSIVE<sup>TM</sup> 3D MAPPING FOR ESRI



Manage, Process, View, Check,  
Extract, Publish, Share and Embed

[WWW.ORBITGT.COM](http://WWW.ORBITGT.COM)

# WORLD LEADING 3D MAPPING SOLUTIONS FOR THE ESRI AND GEOCORTEx PLATFORM

Orbit GT's 3D Mapping Solutions add access to very large and complex datasets to the Esri platform. Terabytes of aerial oblique imagery, extremely large sets of streetlevel imagery and point clouds, outdoor and indoor 3D scanning, large drone based mapping data and much more, is all accessible and fused in a single click.

Orbit GT's expertise on managing terabytes and petabytes of data is a perfect add-on for the Esri portfolio, either for ArcGIS Desktop, ArcGIS Pro, for ArcOnline as a widget or within GeoCortex. Build your own plugin using Orbit GT's HTML5 Viewer SDK or use one of the free plugins available.



## Unique Strong Industry Support

Orbit GT enjoys unique global industry support, required to guarantee full compatibility with any and all hardware system collecting 3D data. This is a basic requirement for every organisation, and **avoids getting locked up** in a single-provider black-box solution.

## Full Esri Platform support

Orbit GT's 3D Mapping Viewer SDK is **free to use** in ArcOnline (as Widget), ArcGIS Desktop (as add-in) and other Esri products. Integrations can include exchange of measurements, save as objects, vector data overlays, view position indication, 'look here' selection and much more.

## View & Performance

The Orbit 3D Mapping plug-ins give access to 3D Mapping content of every type and content provider, right into your GIS. The portfolio supports seamlessly all data, all types of 360° and planar imagery, aerial oblique and drone imagery, with petabytes of point cloud, with fast access to unlimited volumes of data. Orbit GT's optimized performance easily beats Esri's generic solutions **by a factor of 10**. **Streaming. Limitless. Easy. Fast.**

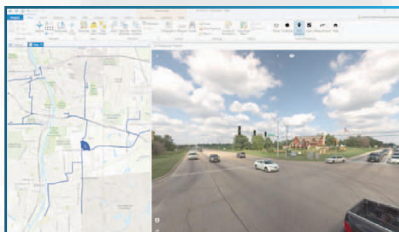


## Integrated Measurements

Measure any object, distance, line, area and **copy results to your Esri host** as new layer features, attribute as pleased. Use point cloud data and/or image data in any combination to get the best result possible at ease.

## Access, Share, Integrate, Publish

Publish your 3D Mapping project together with reference basemap or vector data using on-premise **3DM Publisher** or **www.3dmapping.cloud** to fuse with other 3D Mapping resources such as Terrestrial, Streetlevel, Indoor, Aerial Oblique or UAS Mapping content. Present up-to-date imagery, point cloud, and mapping results to customers, contractors, or to the public at large, as part of your ArcOnline project.



Data © IV/Image-V, Mandli, Michael Baker Int'l

## Smart, Simple, Safe

The Orbit GT portfolio for 3D Mapping is arguably **the most comprehensive, flexible and open platform available**. Capable of working with massive volumes of data, with guaranteed hardware support, it is perfectly integrated in Esri. **One solution covers all. With free plugins.**



© Orbit GT, 2018

Orbit GT nv

Scherpeputstraat 14 9160 Lokeren Belgium | Enterprise VAT BE 0412.104.993 | RPR Dendermonde  
www.orbitgt.com | Tel +32 9 340 5757 | info@orbitgt.com | Bank Account: KREDBEBB - BE57 7330 1675 2435

